

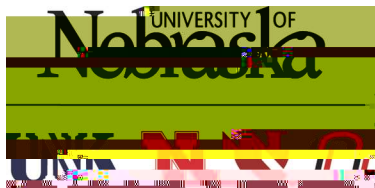


Collaboration Initiative Seed Grant Award Recipients

July 1, 2020



| Proposal Title | PI Name | Co PI Name | Participating Campuses |
|---|---------------|-------------------------------------|------------------------|
| A Cybersecurity Educational Platform by Automatically Generating Personalized Feedback | Myoungsu Song | | UNO |
| | | Ileen Kat Sch | UNL |
| | | Harvey Sy Ri Zhao | UNO UNO |
| A global soil spectral calibration and prediction network to characterize the global soils | Yufeng Ge | | UNL |
| | | Pei-Chi Hung Nuwan Wijewardane | UNO UNL |
| An Integrated Computational and Experimental Approach to Dissect the Emergence of Antimicrobial Resistance (AMR) | Rajib Saha | | UNL |
| | | Diganta Datta Sanocha Fernando | UNK UNL |
| An integrated computational and experimental study to investigate the metabolic regulation of Staphylococcus aureus | Ken Bayles | | UNMC |
| | | Rajib Saha | UNL |
| | | Vinai Chitteshamiltonas Paul Fey | UNMC UNMC |
| Characterization of HydroMechanically Coupled H o l e | | | |

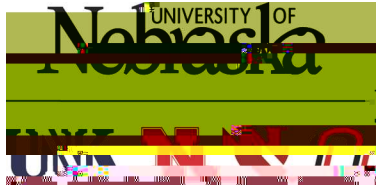


Collaboration Initiative Seed Grant Award Recipients

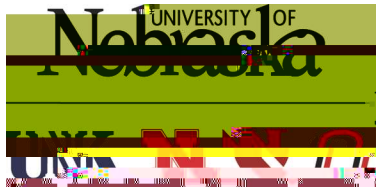
July 1, 2020



| Proposal Title | PI Name | Co PI Name | Participating Campuses |
|--|-----------------|-------------|------------------------|
| Developing an Alternative Genetically Modified Material from Raw Corn Stover and Bioethanol Bioderived Bioplastics, Biogas and Bioethanol | Mahmoud Shakoui | | UNK |
| | | Cody Stolle | UNL |
| Development and Application of Next-Generation Biomedical X-ray Imaging | | Joseph Hula | " B UNL |
| | | | |
| | | | |
| | | | |
| | | | |
| | | | |
| | | | |
| | | | |
| | | | |
| | | | |
| | | | |
| | | | |

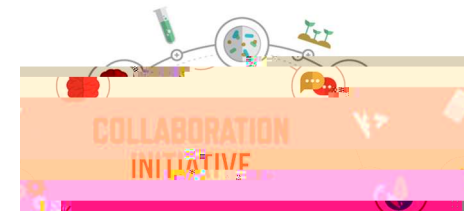


Collaboration Initiative



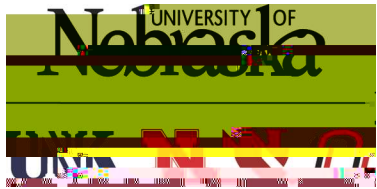
Collaboration Initiative Seed Grant Award Recipients

July 1, 2020

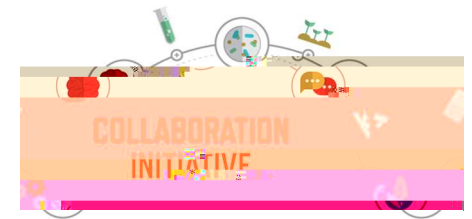




**Collaboration Initiative
Seed Grant Award Recipients
July 1, 2020**



Collaboration Initiative Seed Grant Award Recipients July 1, 2020



| Proposal Title | PI Name | Co-PI Name | Participating Campuses |
|----------------|---------|------------|------------------------|
|----------------|---------|------------|------------------------|

